

Dujana House

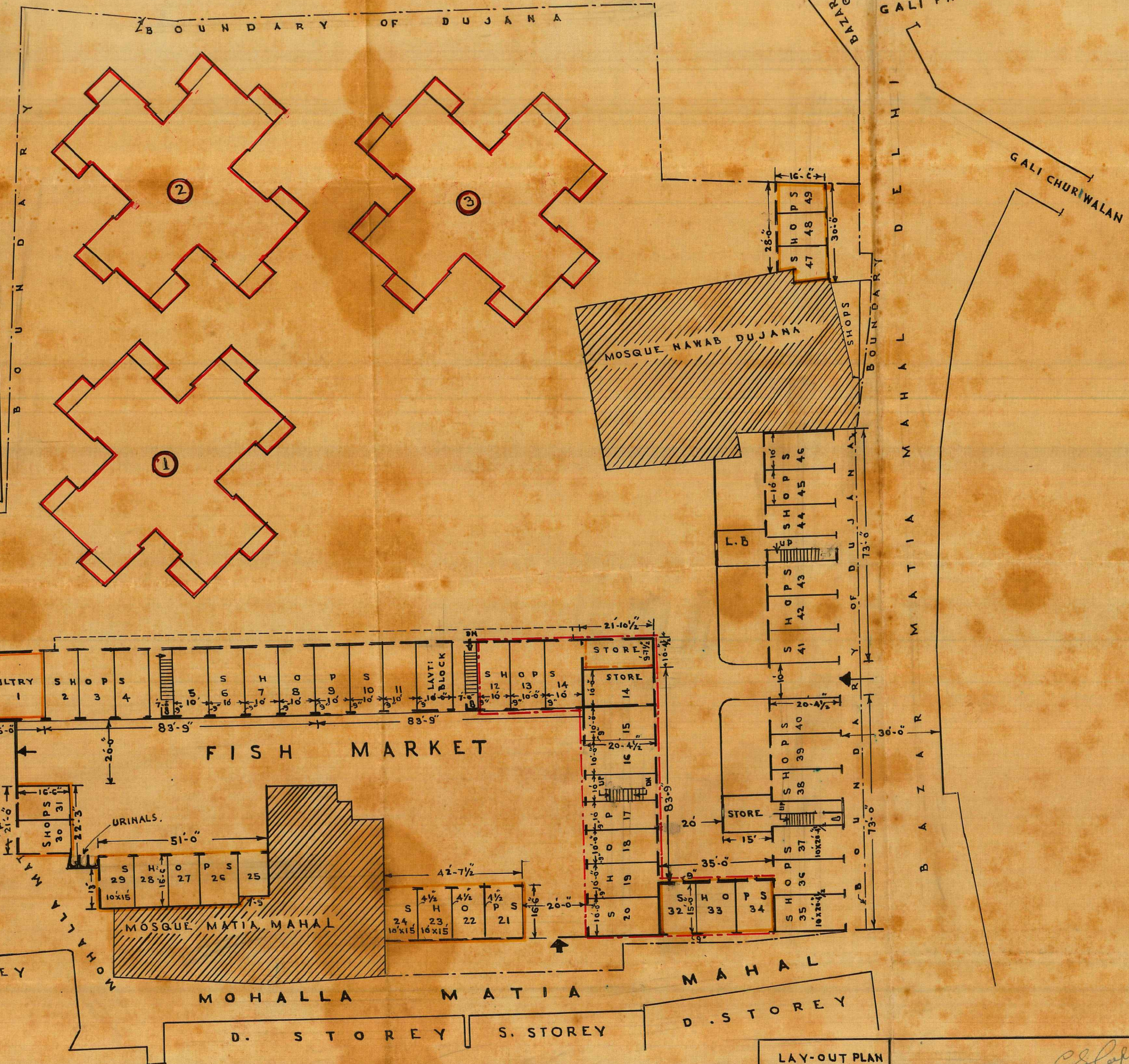
Misc
1.1.1
902

DELHI IMPROVEMENT TRUST. LAY-OUT PLAN OF DUJANA HOUSE.

SCALE:- 20 FT TO AN INCH.

REFERENCES:-

- ① BLOCK NOS 1 2 3 :- 1 2 = 48 SINGLE ROOMED GRS
3 STOREYED ③ = 12 DOUBLE ROOMED GRS
- ② NO OF GRS ABOVE SHOP NO 2 TO 20 & 35 TO 46 = 30 GRS:
- ③ TOTAL NO OF SINGLE RM: GRS = 78
- ④ SINGLE STOREY BUILDING CONSISTS OF SHOP NOS 21 TO 34 &
47 TO 49, 1 & STORE TOWARDS SOUTH
- ⑤ TOTAL NO OF SHOPS:-
FISH MARKET --- 31 SHOPS.
GENERAL SHOPS --- 18 "
- ⑥ --- SHOWS BASEMENT.



LAY-OUT PLAN OF DUJANA HOUSE	<i>C. S. Lall</i> A.R.I.B.A., F.I.I.A. ARCHITECT D.I.T.
ASSISTANT ARCHITECT	<i>Prasad</i> 21.6.57
DRAWN BY	G.D. KADU
TRACED BY	<i>Richard</i> 13.6.57
CHECKED BY	<i>Prasad</i>
I.T.A NO	680/A 20.11.57